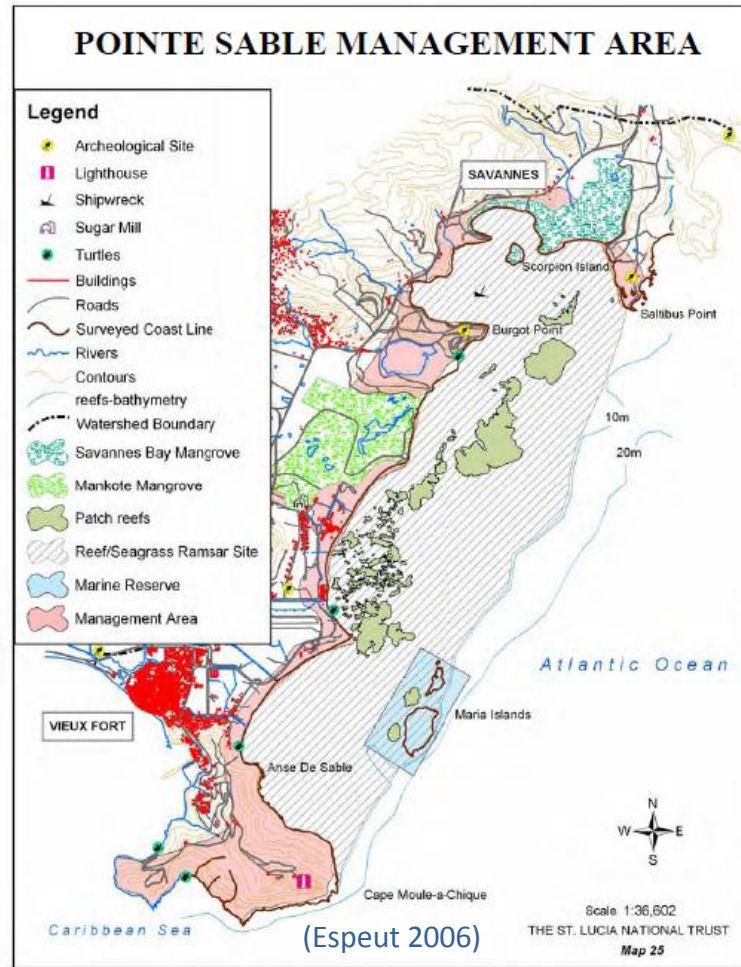


Socio-economic Monitoring
by Caribbean Challenge

MPA Managers
(CC SocMon Project)

SocMon demonstration study site: Pointe Sable Environmental Protection Area



SocMon Training Workshop
16-20 January 2012
Juliette's Lodge Hotel, St. Lucia

About the PSEPA

Socio-economic Monitoring
by Caribbean Challenge

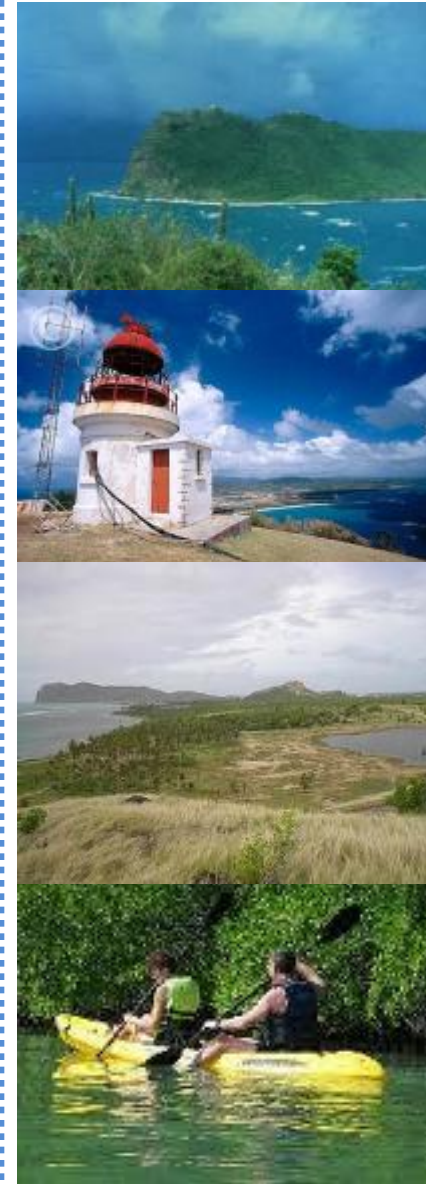
MPA Managers
(CC SocMon Project)



ERMES



- Environmental Protection Area comprising:
 - 1 wildlife reserve: Maria Islands (1982)
 - 2 marine reserves: Mankote mangrove area (1986) & Savannes Bay and Scorpion Island (1984). Both designated RAMSAR sites (2002)
 - Nature reserve (Maria Islands)
 - National landmark (upper Moule-a-Chique)
 - Historical sites
- Designated in 1986
- 1,038 hectares, 688 of which is marine
- Only EPA designated in St. Lucia
- Management agency:
 - Ministry of Physical Development, Environment and Housing
- Marine reserves management responsibility:
 - Department of Fisheries



Importance of area for conservation



- Composed of many types of ecosystems:
 - Seagrass beds, mangroves, coral reefs and nearshore islands
- Coastal ecosystems in “relatively good state of preservation” (Espeut 2006)
- Supports
 - locally important fisheries
 - community livelihoods
- Negligible human habitation within the area but...
 - surrounding inland and coastal communities of the eastern and southern areas of Vieux Fort (2nd largest town) can impact and be impacted by the PSEPA



Activities/uses within the PSEPA



- Fishing: pot, spear, seine
 - 2 small fish landing sites (Savannes Bay and Bois Chadon)
- Sea moss farms:
 - decreased activity in recent years
- Charcoal production
- Tourism: hotels
- Turtle nesting – Bois Chadon beach
- Historical sites
- Recreational: *inter alia* beach-going (Bois Chadon & Anse de Sable), windsurfing, horseback riding, kayak tours etc.



Issues/concerns



- Anse de Sable use and user conflicts
 - Jet skis vs. motor boats in nearshore
- Overfishing
- Inappropriate/destructive fishing practices
- Land-based sources of pollution
- Loss of mangroves & seagrass beds
- Incompatible developments
- Poor enforcement capacity
- Sand-mining?
- Anything else?



PSEPA plans, projects & research



- PSEPA management plan 2009-2014
- Interpretation and Education Plan
(Satney & Chase 2008)
- Management capacity assessment of MPAs
in the Caribbean (Gombos et al. 2011)
- OPAAL Project
- Any others?

The SocMon fit

Linkage to PSEPA Management Plan actions and activities or is there something else?



- Strategic Area 2: **Effective management of important ecosystems and resources**

- *Action 5: Management of critical ecosystems*

- Activity 5: Develop and implement management plans for existing protected areas within the PSEPA (Page 39)

- Strategic Area 2: **Effective management of important ecosystems and resources**

- *Action 6: Promotion of sustainable resource use*

- Activity 4: Develop new/alternative livelihood initiatives to replace detrimental practices (Page 40)

- **Data management**

“In developing the data management system, the MCE will ensure that, in addition to the biophysical data, more information will be gathered on types of resource use, user groups, origin of users, patterns and levels of use, use/user conflicts, impact of uses on resources, and benefits to the community.” (Page 43)

