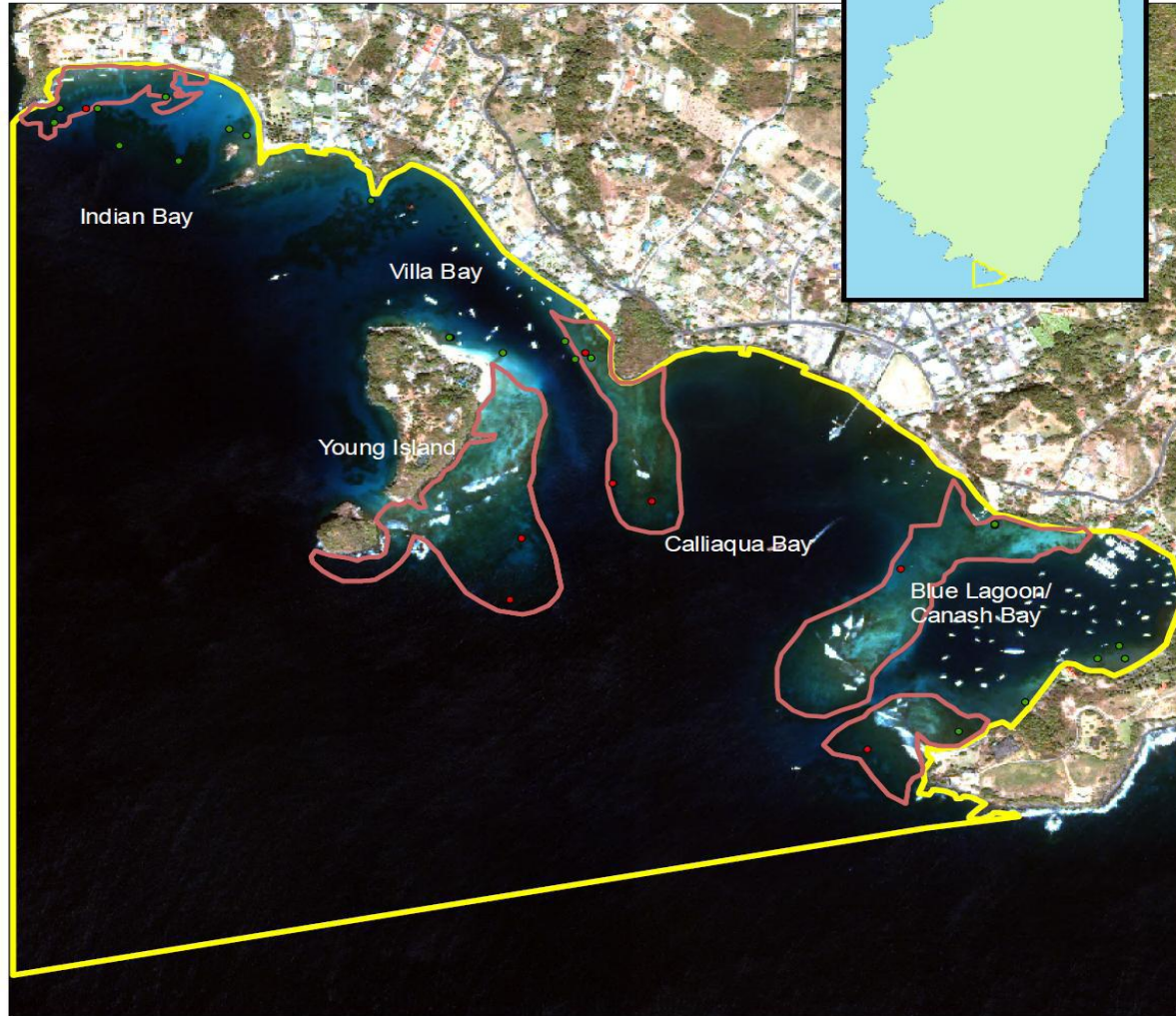


Socio Economic & Environmental Monitoring in the Proposed South Coast Marine Park



Olando Harvey, Althea Nanton & Andrew Lockhart

South Coast Marine Conservation Area



Legend

- Benthic and Fish Survey Sites
- Seagrass Survey Sites
- ▭ Predicted Coral Habitat
- ▭ South Coast MCA Boundary

0 125 250 500 750 1,000
Meters

Created by Jamie Kilgo
August 2010

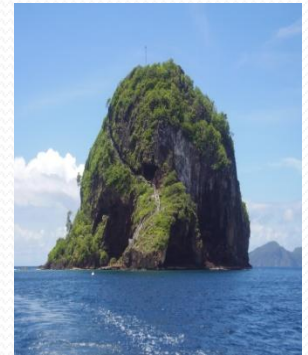
The Nature
Conservancy 
Protecting nature. Preserving life.™



South Coast MPA (Proposed)

Introduction/Background

- One of 10 Marine Conservation Areas
- Fisheries Act 1986, Regulations 1988
- Encompasses 5 communities in one of the largest constituencies in SVG
- Within main tourist hub on St Vincent island
- 2 Marinas
- Young Island Resort (Green Globe Awardee)
- Fort Duvernette
- Dive sites
- Swimming & picnicking by local residents & nationals



SocMon in the SCMCA

Goal:

- To establish baseline data on stakeholders' attitudes and perceptions on the Proposed South Coast Marine Park

Objectives:

- To determine the various uses/users/use patterns in the area.
- To measure the impact of any new management arrangements on stakeholders' livelihoods in the area.
- To assess stakeholders' awareness of the current conservation status of the area.

SocMon in the SCMCA

Methodology:

- Key Informant Interviews w/ fishers, tourism stakeholders & taxi driver
- Survey

Instrument:

Questionnaire (5)

Open/closed ended questions

Variables

- Demographics
- Uses of the coastal & marine resources for leisure & livelihoods
- Condition of the resources of the Study area
- Threats to the resources of the area
- Knowledge of threats, rules & regulations
- Interest in management decision-making

Questionnaire was piloted with members with Group 2 to eliminate any ambiguity

Sampling units:

Households

Simple Random Sampling

Area:

Calliaqua

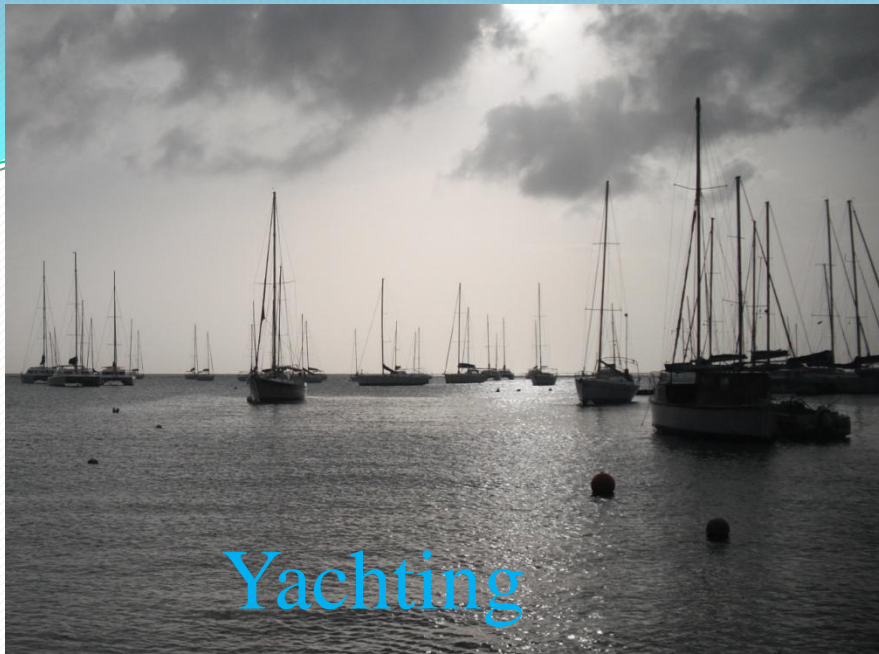
Date:

20 October 2011

Enumerators:

Olando Harvey (TCMP), Andrew Lockhart (NPA) & Althea Nanton (TCMP)

Activities



Yachting



Football

Stakeholder Interviews



Fisher Calliaqua



Hotelier Glen

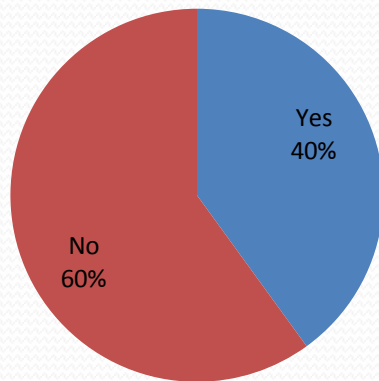
Key Informant Interviews

- Aware of the establishment of the fisheries conservation area.
- Only aware of the rules regarding fishing within the area.
- Most fish that are landed in Calliaqua are not caught within the SCMCA. The area is used by fisheries in times of bad weather and for baitfish. Consequently, closure of the area to fishing would have a high impact on their livelihoods.
- They are not currently involved in the decision-making process that manages the area, but would like to be part of the process.

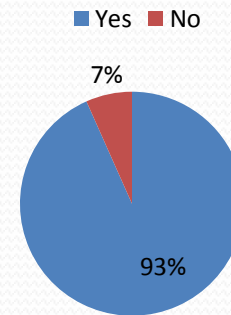
SocMon in the SCMCA

Results:

Knowledge of the SCMCA



Percentage of Persons Who Swim in The Area



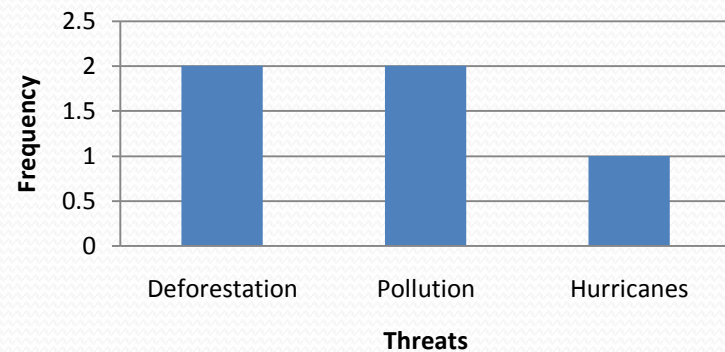
SocMon in the SCMCA

Results:

Condition of Beaches



Top 3 Threats

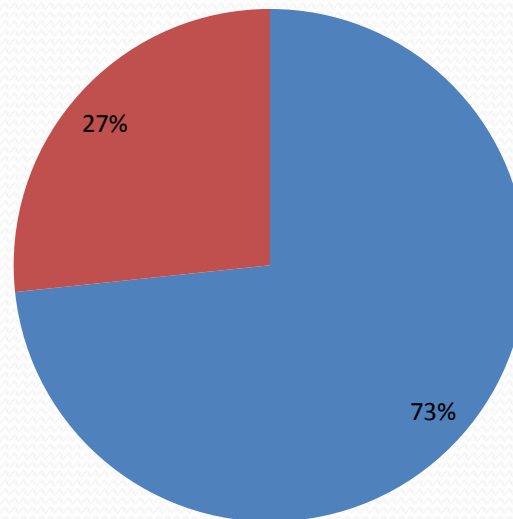


SocMon in the SCMCA

Results:

Compliance With Fisheries Regulations

■ Some Compliance ■ Full Compliance



SocMon in the SCMCA

Key Learning:

- Multi use marine space
- Adequate knowledge of rules & regulations
- General conditions of beaches needs improvement
- Limited knowledge of marine resources such as mangroves & sea grasses
- Land based & other sources of pollution – a real threat
- Community are willing to participate in any new management arrangement
- SocMon in the SCMP is a positive initiative