

AWARENESS OF POINTE SABLE ENVIRONMENT AREA



PRESENTATION OUTLINE

- Background
 - Goals
 - Objectives
- Method
- Results: Key Informant and Household Surveys
- Key Learning

BACKGROUND OF POINTE SABLE ENVIRONMENTAL PROTECTION AREA (PSEPA)

- The PSEPA is located from Pointe De Caille to Moule A Chique including Savannes Bay and Pointe Sable in the quarter of Vieux Fort.
- Consists of a narrow coastal strip, Savannes Bay Mangrove and Mankote Mangrove.
- Declared protected area August 27th, 2007 under the Physical Planning Act of 2001.

GOALS AND OBJECTIVES

Goal

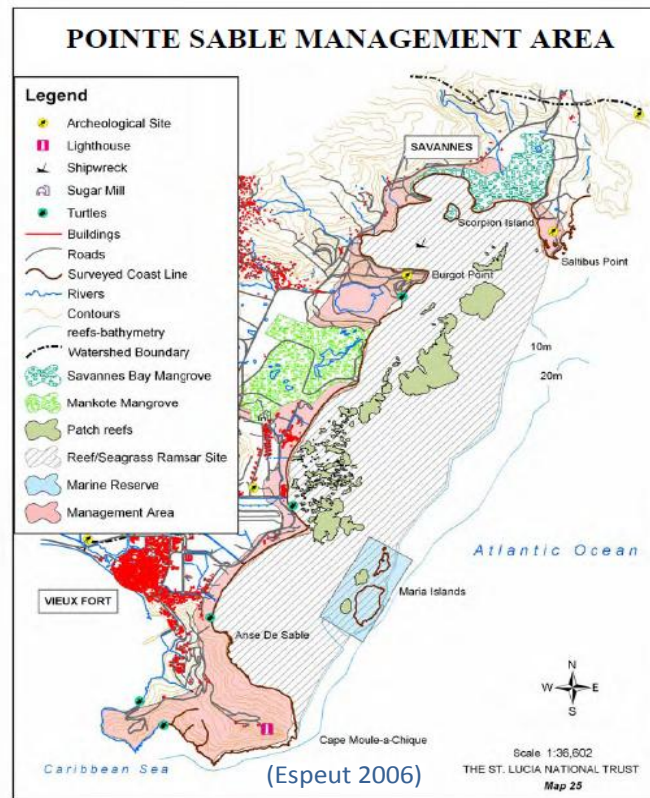
- Is the community aware of the designation of the area as an EPA?

Objectives

- To what extent is there willingness of persons to accept the area as an EPA
- To what extent are current practices compatible with the management plan
- To what extent are stakeholders willing to participate in the management and monitoring of activities in the EPA

Socio-economic Monitoring
by Caribbean Challenge
MPA Managers
(CC SocMon Project)

SocMon demonstration study site: Pointe Sable Environmental Protection Area



SocMon Training Workshop
16-20 January 2012
Juliette's Lodge Hotel, St. Lucia

VIEW FROM MOULE A CHIQUE



METHODOLOGY

- Survey area was identified
- 3 Key Informants (KIs) were identified and households randomly chosen
- Questionnaires were developed and pre-tested using the SocMon monitoring guidelines
- Questionnaires were administered within the study area, data was collated and analyzed.

TEAM UTILIZING SOCMON GUIDELINES



KEY INFORMANT RESULTS

- KIs aware of the PSEPA prior to interview.
- KIs learnt about PSEPA from
 - colleagues
 - St. Lucia National Trust
- 2 of 3 KIs identified the extent of the area and one had a fair idea.

- KIs agreed with designation for the following reasons
 - ✓ Sustainability of flora and fauna
 - ✓ Touristic opportunities
- KIs were involved in establishment either through work, community personnel or as fishers.
- KIs indentified the following activities at Savannes Bay
 - ✓ Tours to Scorpion and Maria Island
 - ✓ Fishing (Seine, Trolling and Pot)
 - ✓ Savannes Bay Day/Feasts

SEASONAL CALENDAR FOR SAVANNES BAY

Type of gear used		J	F	M	A	M	J	J	A	S	O	N	D	
Pots	Season Catch						—							
	# fishers						●●●●	●●●●	●●●●	●●●●	●●●●	●●●●	●●●●	
Trolling lines	Season Catch	—												
	# fishers	●●●●	●●●●	●●●●	●●●●	●●●●								
Handlines	Season Catch	—												
	# fishers	●	●	●	●	●	●	●	●	●	●	●	●	

Key

Catch: increasing (+), decreasing (--) or stable (o)

(—) represents the fishing season ● 10 fishers

ECONOMIC ACTIVITY WITHIN PSEPA

FISHING

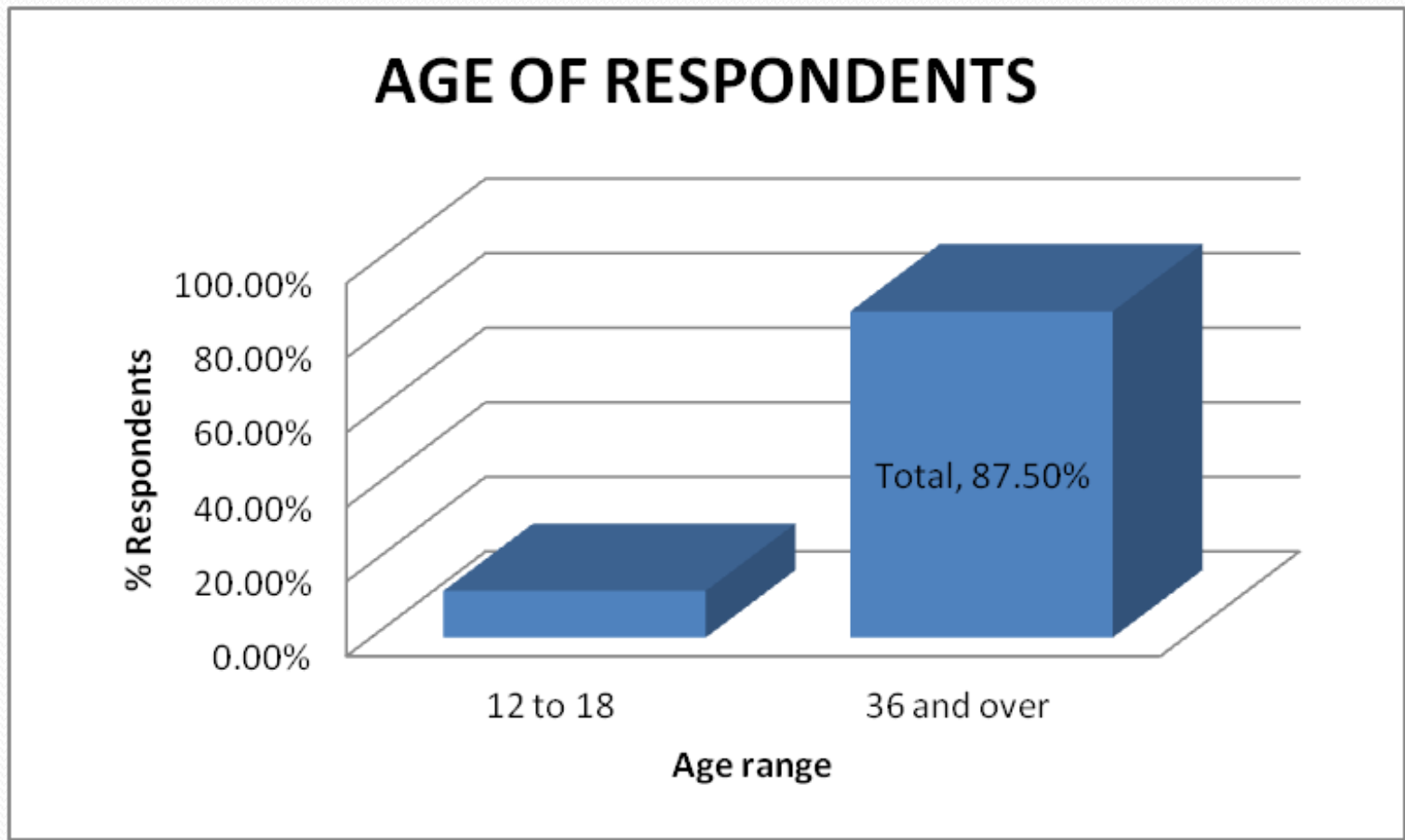
VENDING

CHARCOAL PRODUCTION



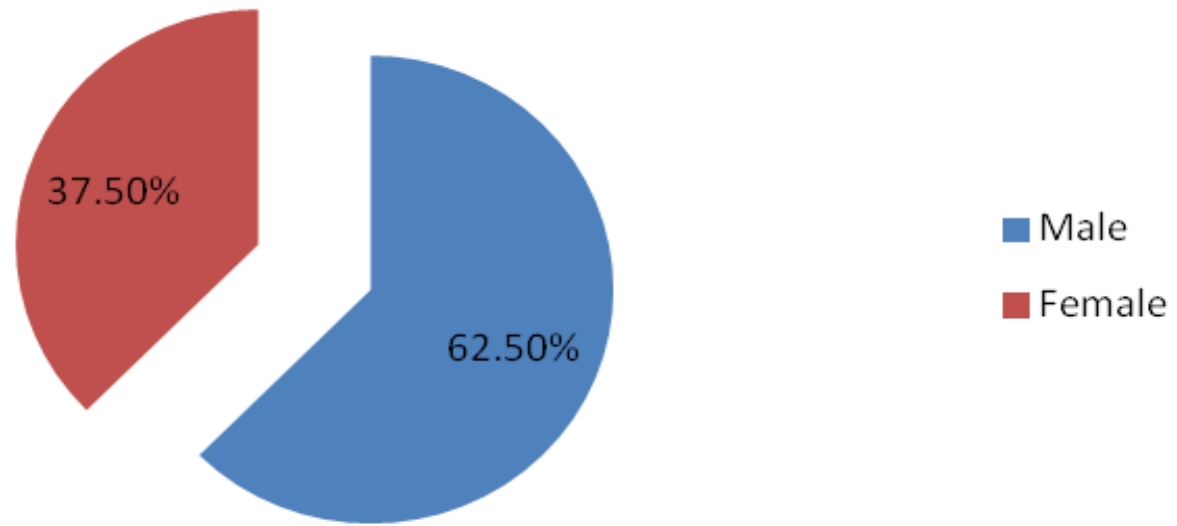
- KIs thought that the Saint Lucia National Trust, Government and other users of the resources earning a livelihood should manage the PSEPA.
- The respondents believe that their role could be to
 - report illegal activities to relevant authorities.
 - work with authorities to further develop the area in a sustainable manner.
 - collaborate with other agencies in public and private sectors, NGO's, quasi government, local groups and the users of the resource
 - minimise pollution in and around the protected area
 - be part of any organisation/ group set up to oversee the management of the area

HOUSEHOLD SURVEY RESULTS



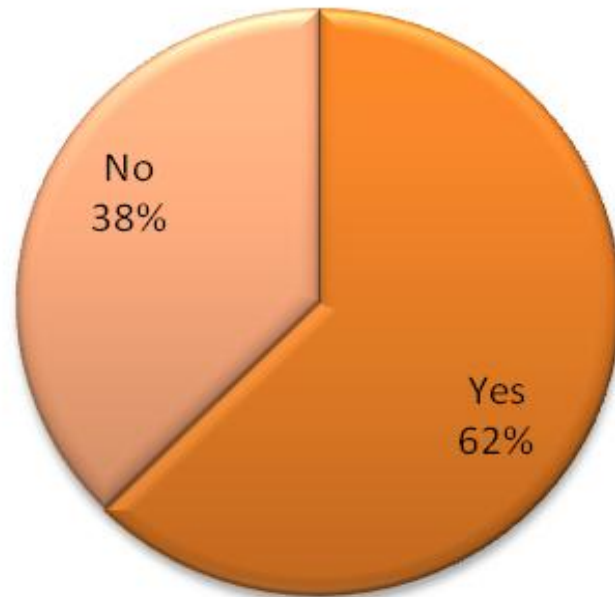
HOUSEHOLD SURVEY

GENDER DISTRIBUTION



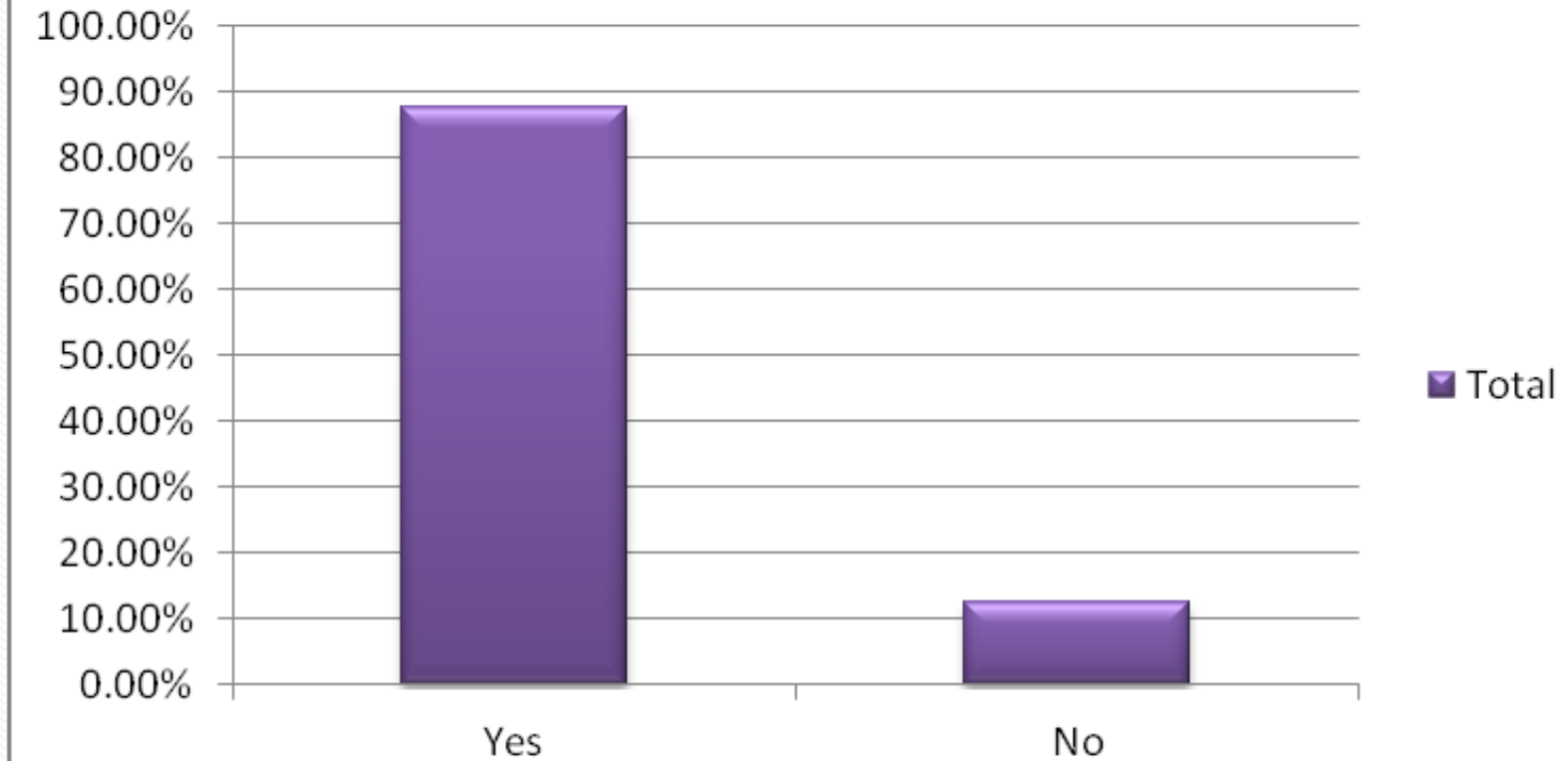
Household Survey

PSEPA AWARENESS



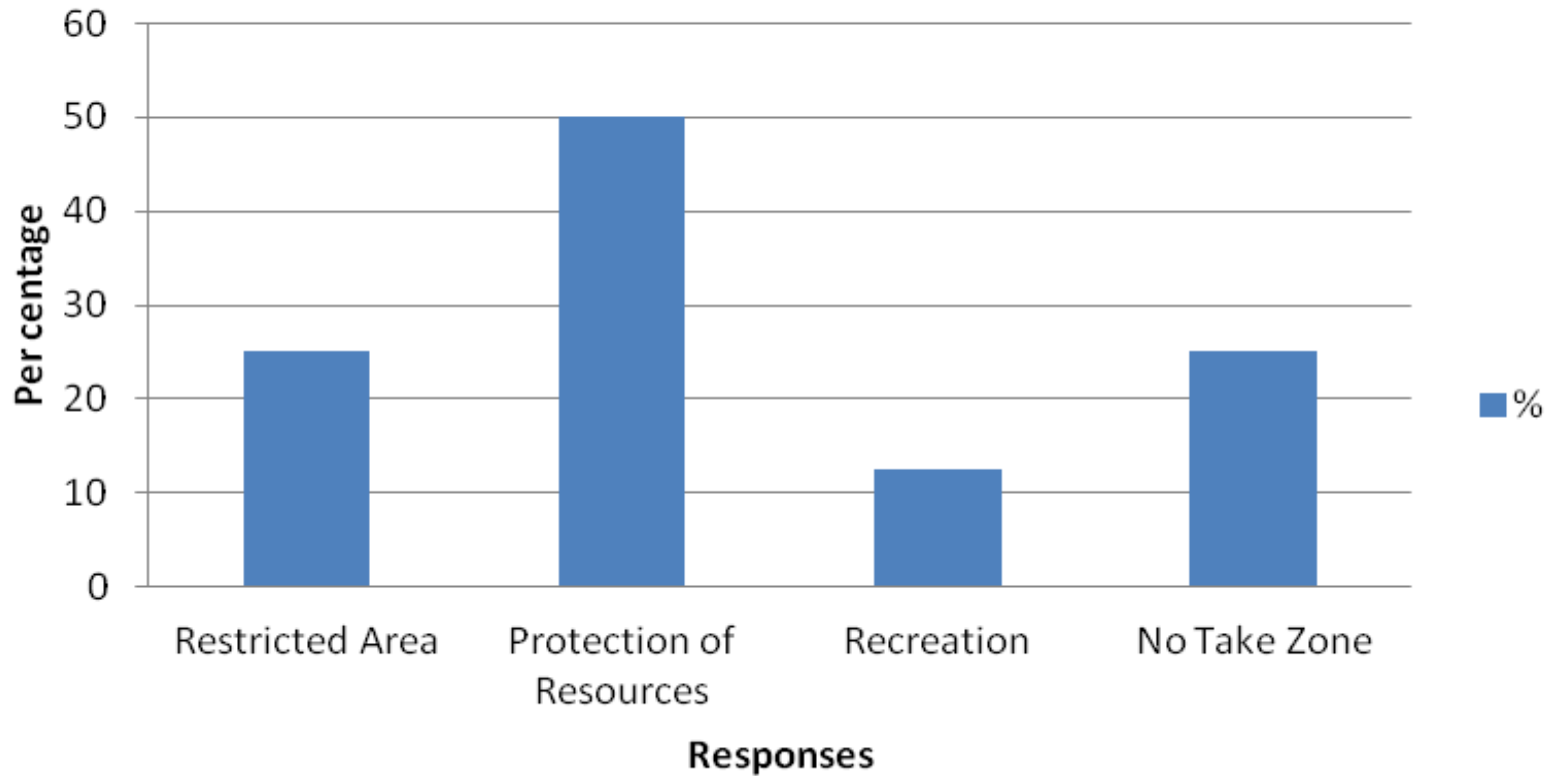
Household Survey

EPA AWARENESS



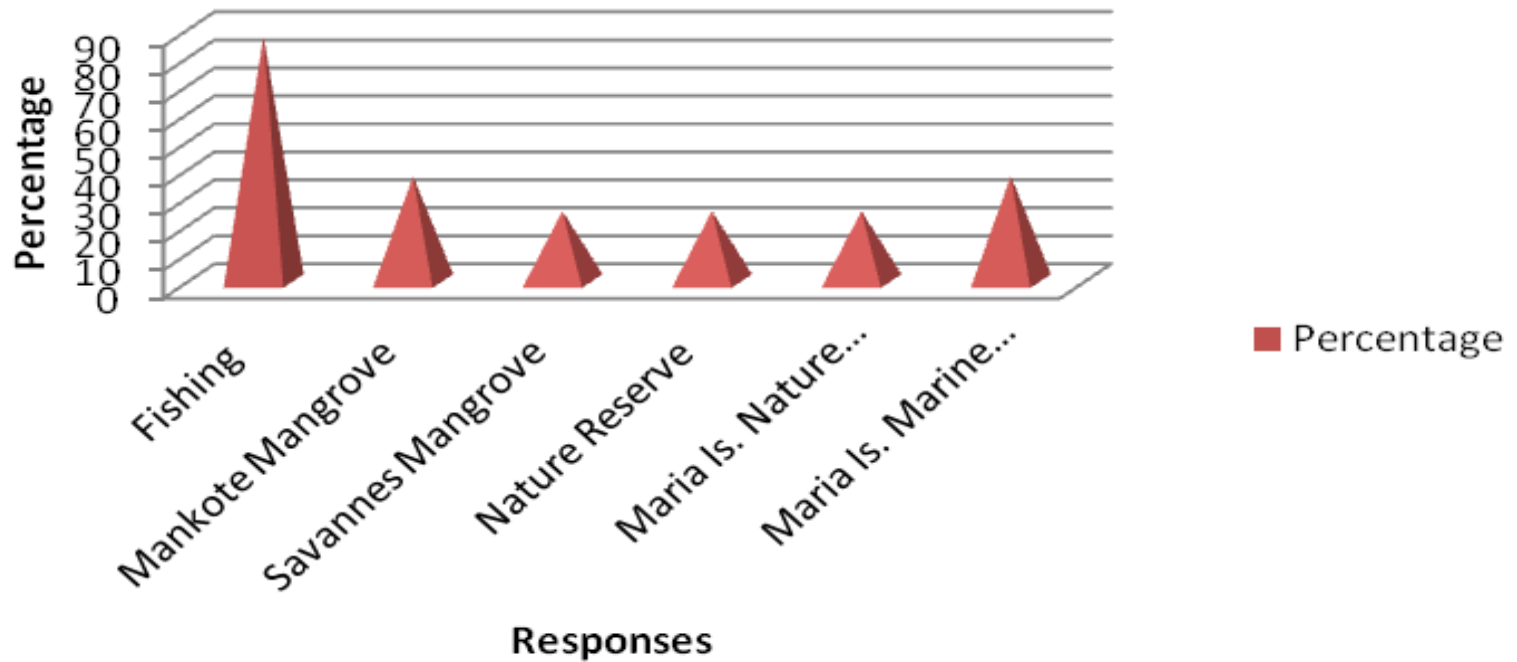
Household Survey

Meaning of EPA to Respondents



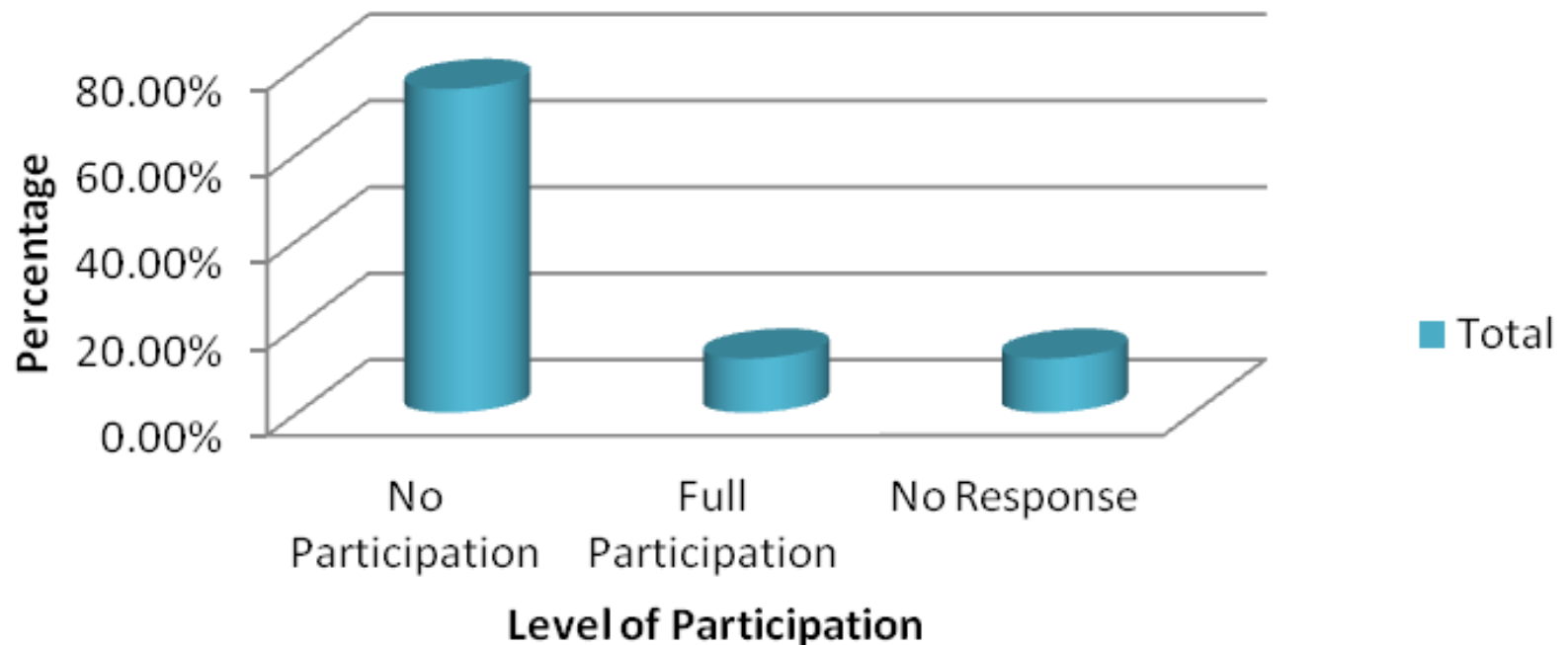
Household Survey

EPA RULES AND REGULATIONS



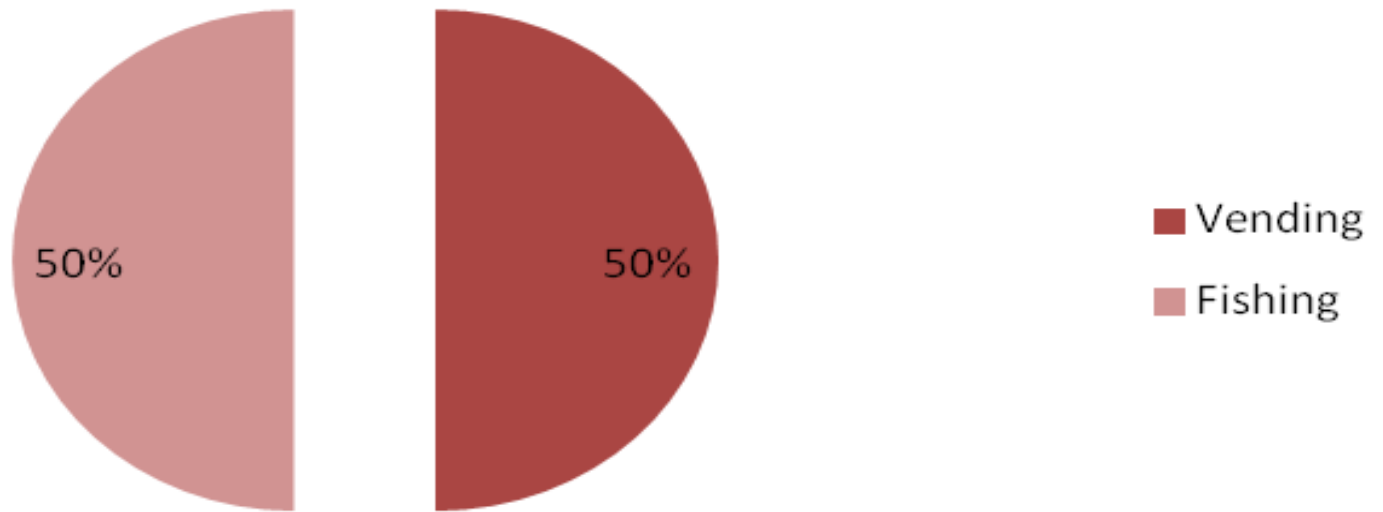
Household Survey

Respondents Involvement in PSEPA Establishment



Household Survey

Percentage



KEY LEARNING

- Respondents are willing to accept the areas designation as an EPA
- Fishers within the Savannes Bay area are quite knowledgeable of the EPA
- To some extent, fishers and the community at large practices, are in keeping with the management plan as it relates to fishing.
- Results indicate that they are participating in the management of the EPA.

Thank You



The End